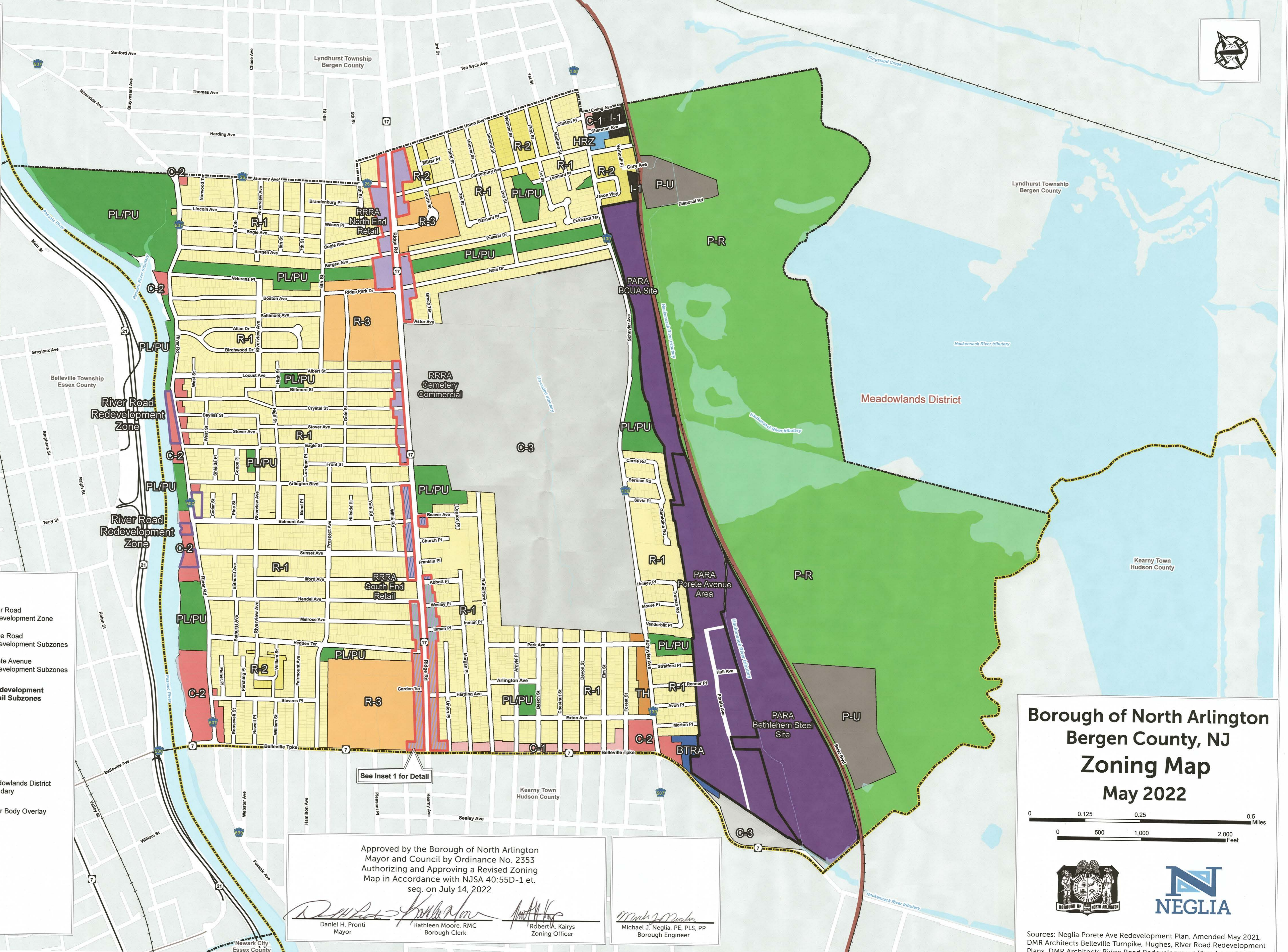


Inset 1: Ridge Road Redevelopment Area South Subzones

LEGEND

	R-1, One Family Residential		River Road Redevelopment Zone
	R-2, One & Two family Residential		Ridge Road Redevelopment Subzones
	R-3, Multi Family Residential		Porete Avenue Redevelopment Subzones
	TH, Townhouse		Ridge Road Redevelopment South End Retail Subzones
	C-1, Commercial		1
	C-2, Commercial		2
	P-R, Park & Recreation		3
	PL/PU, Public Lands and Public Utilities		Meadowlands District Boundary
	C-3, Cemetery		Water Body Overlay
	P-U, Public Utility		
	I-1, Light Industrial		
	BTRA, Belleville Turnpike Redevelopment Area		
	HRZ, Hughes Redevelopment Zone		
	PARA, Porete Avenue Redevelopment Area		
	RRRA, Ridge Road Redevelopment Area		



Approved by the Borough of North Arlington Mayor and Council by Ordinance No. 2353 Authorizing and Approving a Revised Zoning Map in Accordance with NJSA 40:55D-1 et. seq. on July 14, 2022

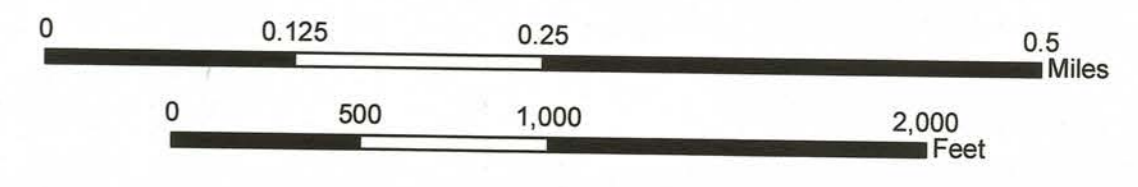
Daniel H. Pronti
Daniel H. Pronti
Mayor

Kathleen Moore
Kathleen Moore, RMC
Borough Clerk

Robert A. Kairys
Robert A. Kairys
Zoning Officer

Michael J. Neglia
Michael J. Neglia, PE, PLS, PP
Borough Engineer

**Borough of North Arlington
Bergen County, NJ
Zoning Map
May 2022**



Sources: Neglia Porete Ave Redevelopment Plan, Amended May 2021, DMR Architects Belleville Turnpike, Hughes, River Road Redevelopment Plans, DMR Architects Ridge Road Redevelopment Plan Amendment, Amended April 2021, Heyer Gruel & Assoc. 2018 Zoning Map Update